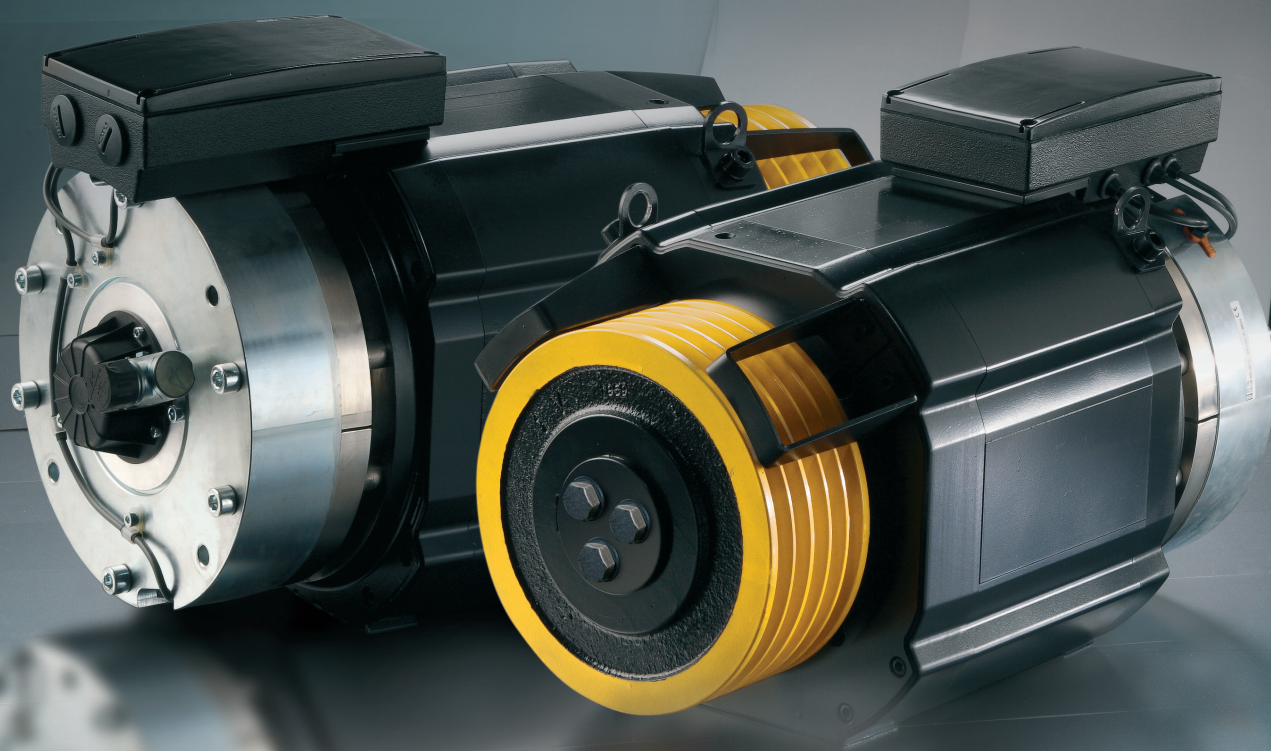


LAFERT, THE IDEAL PARTNER FOR ELEVATOR APPLICATIONS



Lafert has 50 years of experience in the development and manufacturing of electric motors covering the broad needs for reliability, compact designs and energy saving. One of the resulting products is the LIFT series: Permanent Magnet Gearless Machines that give high performance and long life even in critical environmental conditions.

The LIFT machines, now engineered for fast elevators, are combined with a wide range of asynchronous motors and PM motors that are an ideal solution for the elevator industry's requirements both for new buildings and modernisations.

Full range:

- Torque 140 to 850 Nm for payload 240 to 1600kg in roping 2:1
- Single-phase and three-phase drive supply
- Speed: 0,5m/s to 1,6m/s (others on request)
- IP64 absolute and incremental encoders (Endat-sincos-HTL-TTL)
- Brakes in compliance with the UNI EN81-1:2010 and 95/16/EC Directive

Available on request:

- Double coil brakes due to electrical redundancy
- Brakes with cURus Certification and in compliance with ASME A17 Safety Code for the North American market
- Brakes with inductive proximity switches for critical environments and heavy applications
- Brakes with hand release with reduced overall dimensions



interlift 2013

15-18 October 2013
Augsburg - Germany
Hall 7 stand 7175

 **LAFERTGROUP**

50^o SINCE
1962